



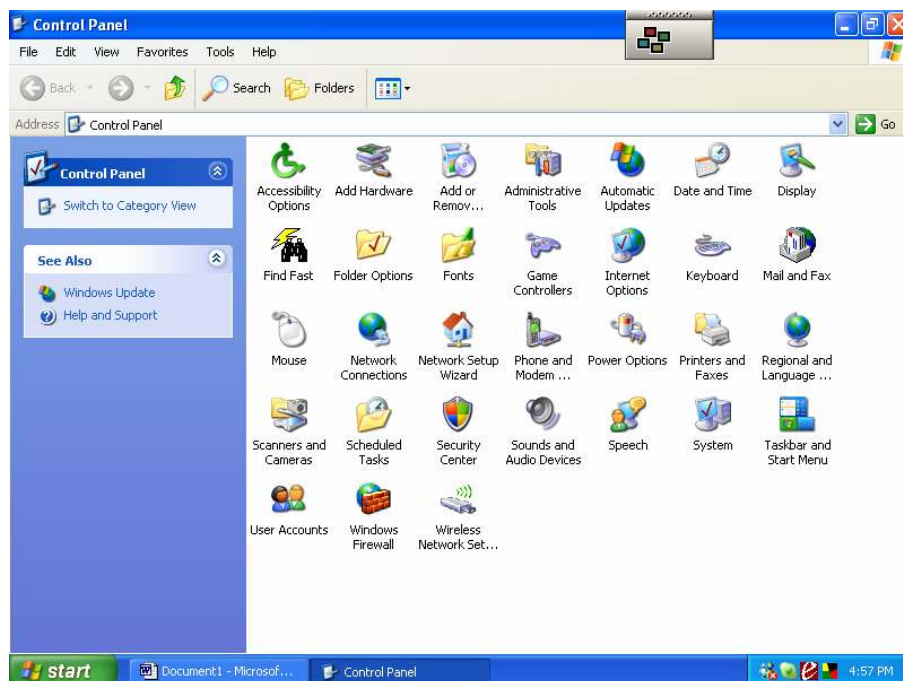
Manually Configure Windows XP firewall (Service Pack 2)

Microsoft Windows XP ships with a built-in firewall that protects your computer against unauthorized programs accessing the network or Internet. AB Tutor Control is a program that uses your network to connect to other computers and hence will be blocked by the firewall.

To fix this, we need to alter the Firewall so that it specifically allows AB Tutor Control to run through the firewall.

The following steps guide you through the process of allowing AB Tutor Control to use the network and must be done on each student (or client) computer. It's not necessary to do this for the main teacher machines.

1. Logon to the student workstation with Administrator access rights
2. Click on the **START** button and click on **Settings - Control Panel**
3. Find the icon **Windows Firewall** and double click it to open

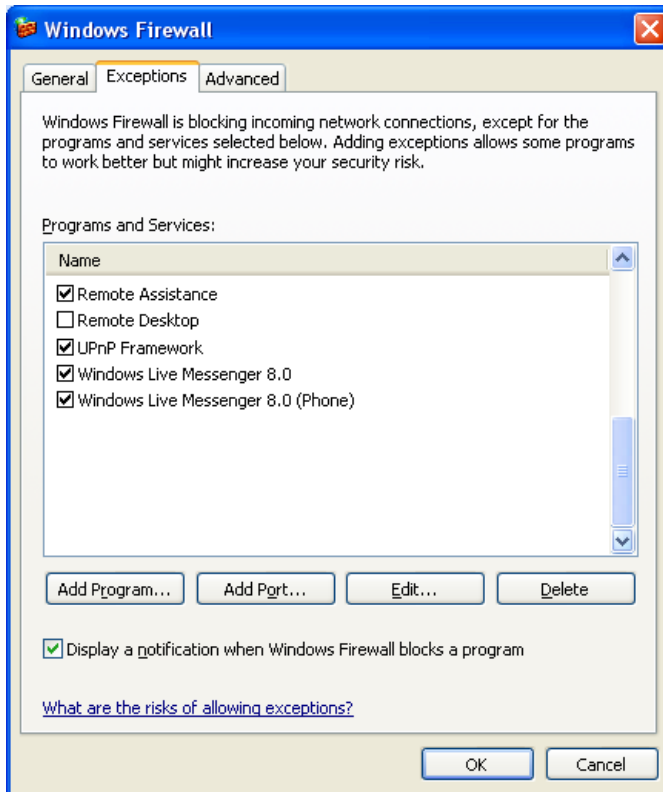


You should now see a window similar to the one below. This is the actual firewall setup window and contains 3 tabs: General, Exception and Advanced

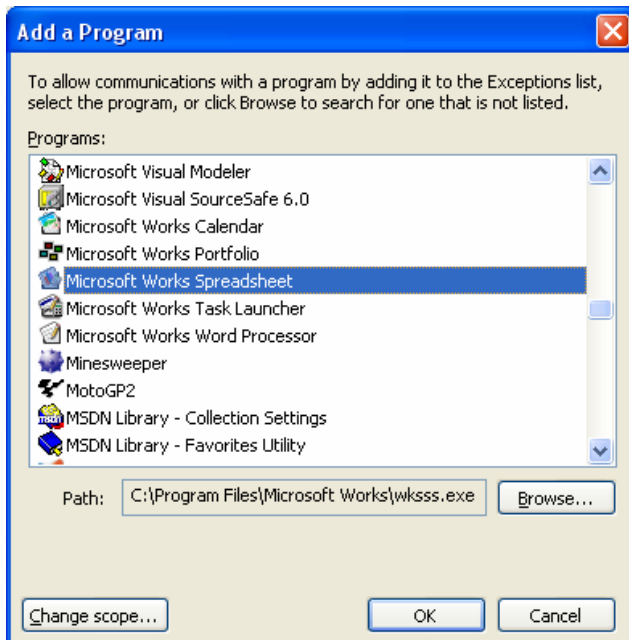


4. Click the **Exceptions** tab

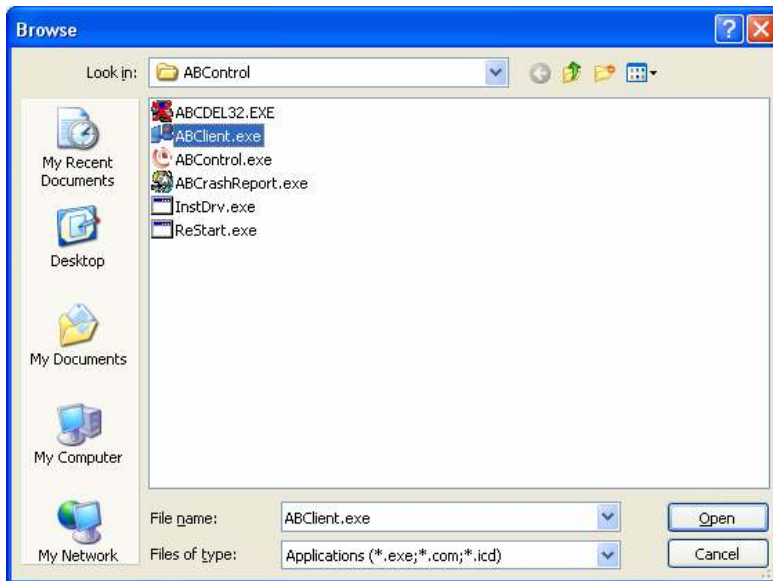
You should now see the following window. Notice that there are 3 buttons, all labeled **Settings** in this window. We need the **first** one of these, just to the right of the words **Local Area Connection**.



5. Click the first **Add Program...** button



6. Select the **Browse** button and browse to the folder where the ABCClient.exe file is located (This is usually C:\Program Files\ABControl)



7. Select the *ABClient.exe* file and press **Open**

8. Press OK and check that the *ABClient* Application has been added to the list and it *ticked*



9. Press **OK** to all open windows and finally close the Windows Control Panel

10. This must be performed on all student machines but not the main tutor machines.